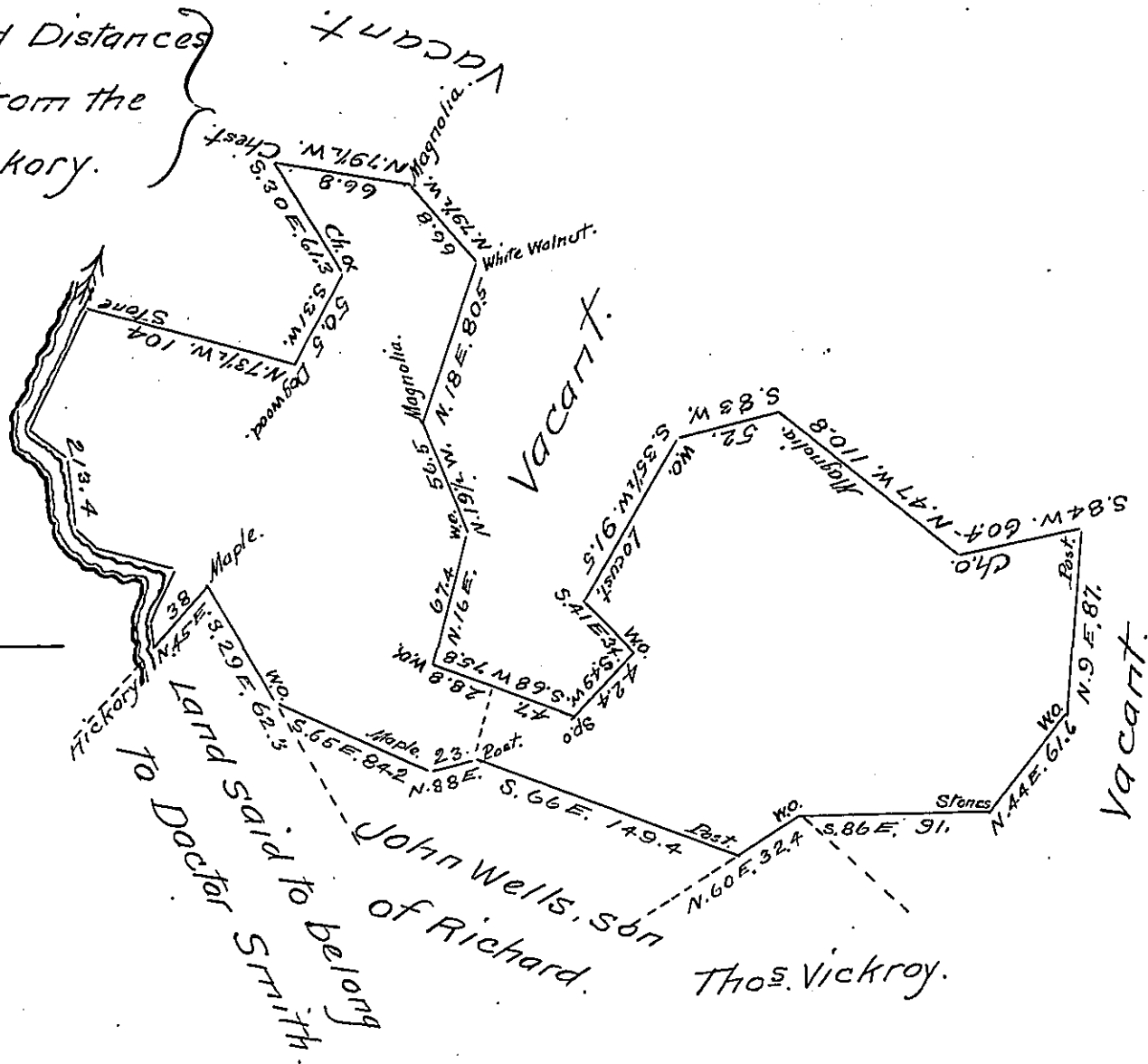


FORM NO. 1.

The Courses and Distances
up the Creek from the
Stone to the Hickory.

- S. 33 W. 24.
- S. 26 W. 41.
- S. 57 E. 22.
- S. 1 W. 34
- S. 50 E. 18
- S. 74 E. 36
- S. 26 1/2 W. 28
- S. 3 E. 10.4

- 213.4



206^{as} & allowance surveyed to George Shick on Warrant dated
31st May 1787.

233-67 & allowance, surveyed to John Wells (son of Richd
on Warrant dated 26 August 1793.

439-67 & allowance, situate in Stony Creek Town-
ship Somerset County

(No further description given)

IN TESTIMONY that the above is a copy of the original remaining on file in
the Department of Internal Affairs of Pennsylvania, made
conformably to an Act of Assembly approved the 16th day of
February 1833, I have hereunto set my hand and caused
the Seal of said Department to be affixed at Harrisburg,
this twenty third day of January 1907.

Isaac D. Brown
Secretary of Internal Affairs.